

Bass

# BOOGIE DOWN

$\text{♩} = 112$   
2

6

9

13

17 **A**

21

26 **B**

30

33

35 **C**

Detailed description: This is a bass line for the song 'Boogie Down'. It is written in bass clef with a 2/4 time signature and a tempo of 112 beats per minute. The piece consists of 35 measures. The first measure is a whole rest. Measures 2-5 contain eighth notes with triplet markings. Measures 6-8 continue with eighth notes and triplets. Measures 9-16 feature a rhythmic pattern of eighth notes with eighth rests. Measure 17 is the start of section A, which repeats the eighth-note pattern. Measure 21 is the start of section B, which introduces a new rhythmic pattern with eighth notes and eighth rests. Measure 26 is the start of section C, which features a more complex rhythmic pattern with eighth notes and eighth rests. The score ends with a double bar line at measure 35.

39



43 **D**



47

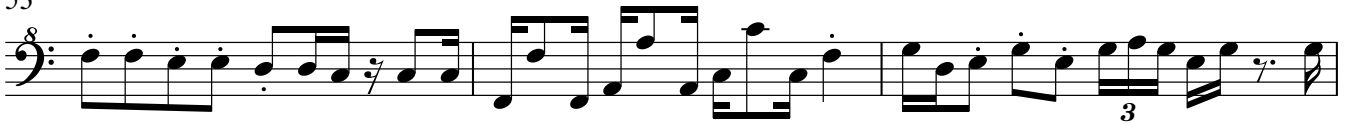


50

**E**



53



56



59

**F**



62



65



67

**G**



70



73

