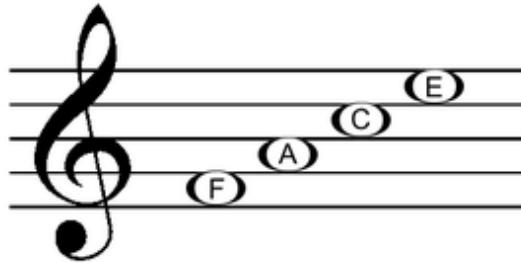


Treble Recorders

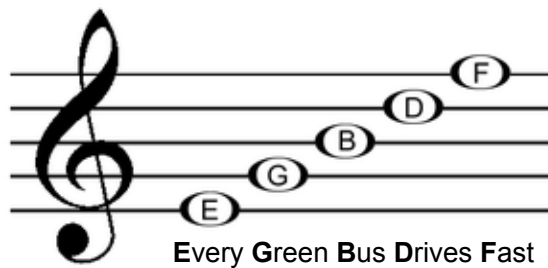
Book 1








Website
www.rod-n-tom.com







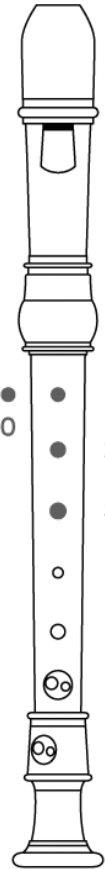
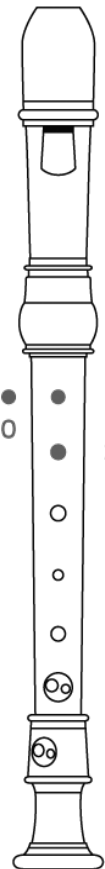
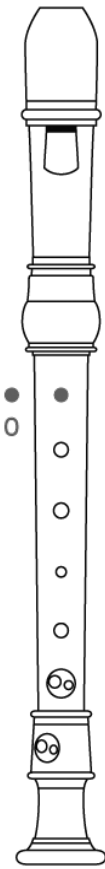
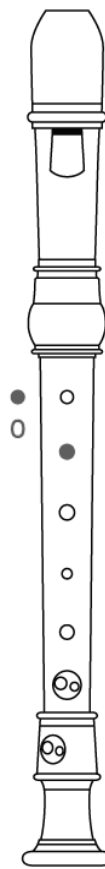
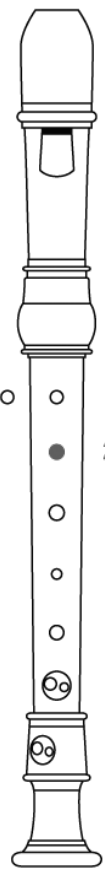
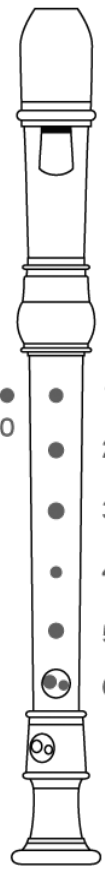
Notes *in the spaces*



Notes *on the lines*



Notes	Name		Value
	Semibreve	Whole note	4 beats
	Minim	Half note	2 beats
	Crotchet	Quarter note	1 beat
	Quaver	Eighth note	½ beat
	Semi-quaver	Sixteenth note	¼ beat
	2 Quavers	2 Eighth notes	1 beat
	4 Semi-quavers	4 Sixteenth notes	1 beat

	C	D	E	F	High G	Low G
						
						

Cups of Tea

Musical notation for 'Cups of Tea' in 4/4 time. The first staff begins with a treble clef, a 4/4 time signature, and a common chord symbol 'C' above the first measure. The melody consists of quarter notes: C4, D4, E4, F4, G4, A4, B4, C5, D5, E5, F5, G5, A5, B5, C6. The second staff continues the melody with quarter notes: C5, B5, A5, G5, F5, E5, D5, C5, ending with a double bar line.

Suo Gan

Musical notation for 'Suo Gan' in 4/4 time. The first staff begins with a treble clef, a 4/4 time signature, and chord symbols 'C', 'D', and 'E' above the first three measures. The melody consists of quarter notes: C4, D4, E4, F4, G4, A4, B4, C5, D5, E5, F5, G5, A5, B5, C6. The second staff continues the melody with quarter notes: C5, B5, A5, G5, F5, E5, D5, C5, ending with a double bar line.

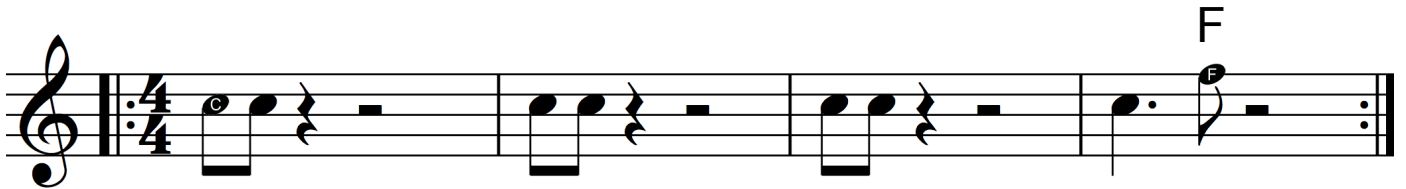
Merrily

Musical notation for 'Merrily' in 4/4 time. The first staff begins with a treble clef, a 4/4 time signature, and chord symbols 'E', 'D', and 'C' above the first three measures. The melody consists of quarter notes: E4, D4, C4, D4, E4, F4, G4, A4, B4, C5, D5, E5, F5, G5, A5, B5, C6. The second staff continues the melody with quarter notes: C5, B5, A5, G5, F5, E5, D5, C5, ending with a double bar line.

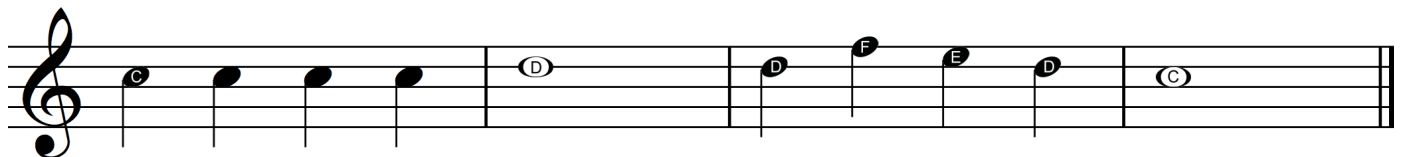
Au Claire de la lune



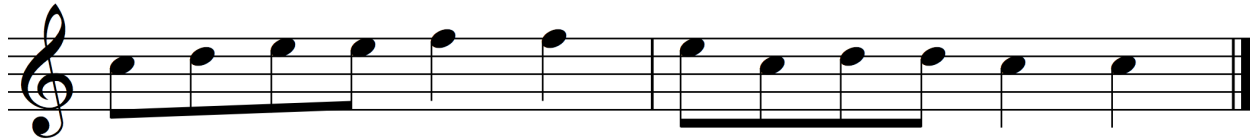
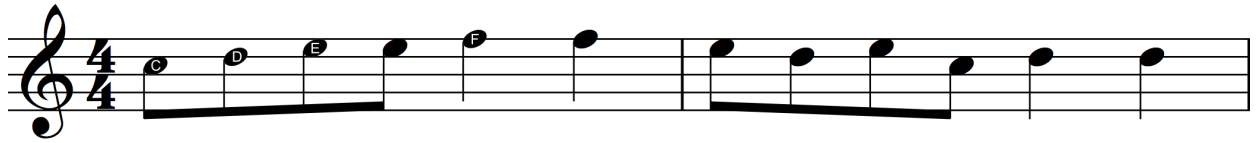
C Jam Blues



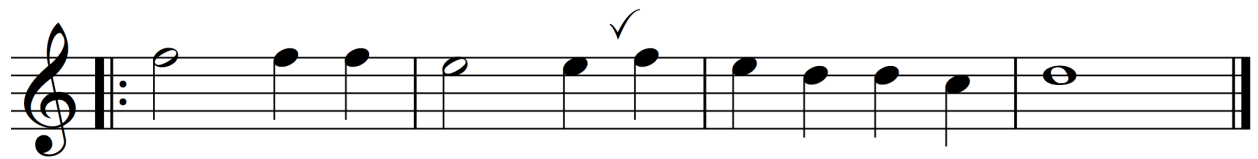
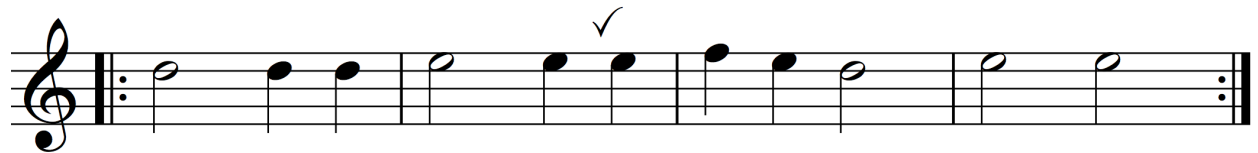
Walking the Dog



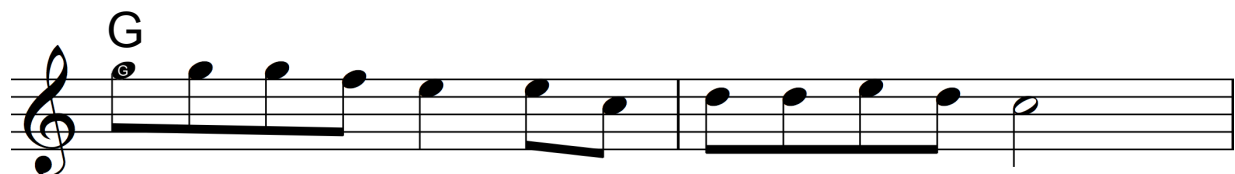
Mattachins



Allemaigne



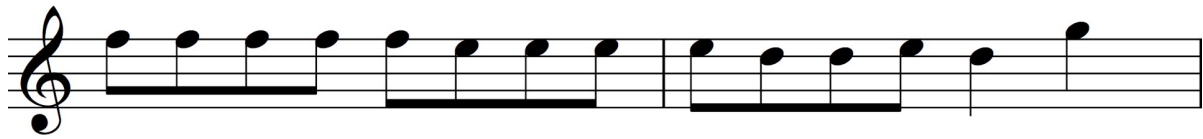
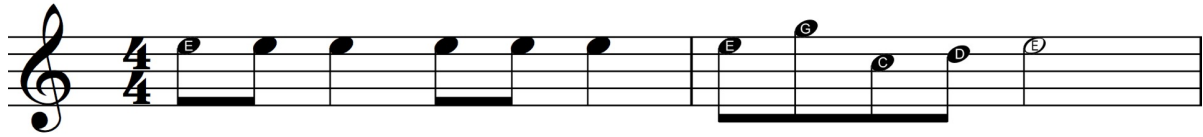
Go and tell Aunt Nancy



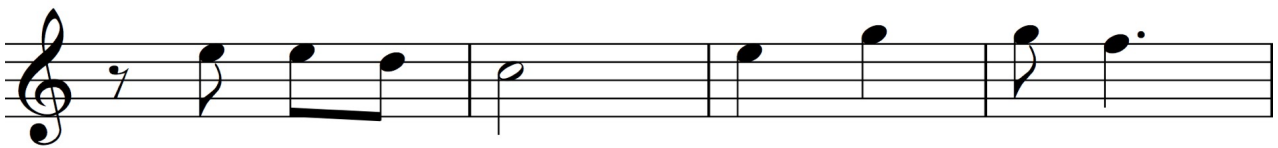
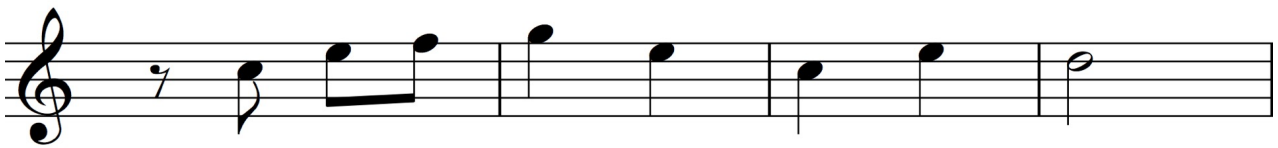
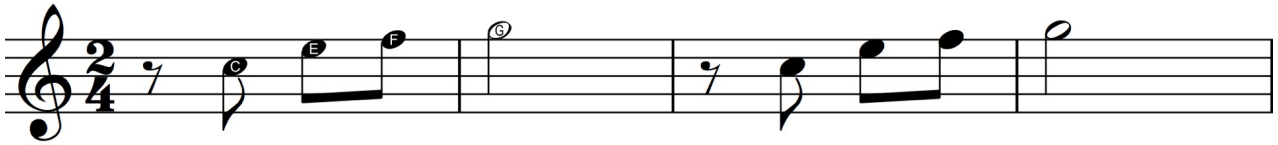
Little Bird



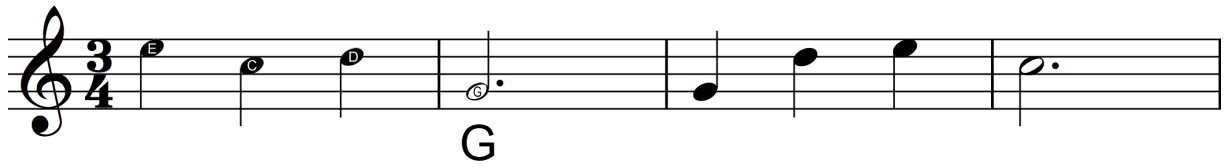
Jingle Bells



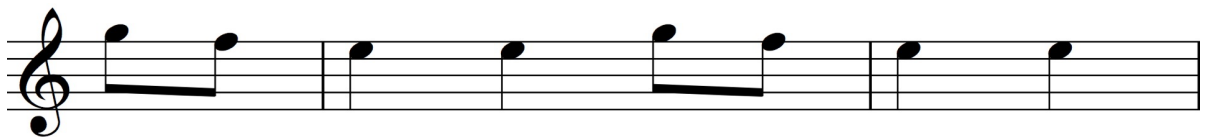
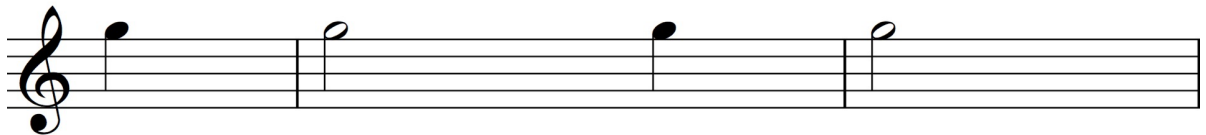
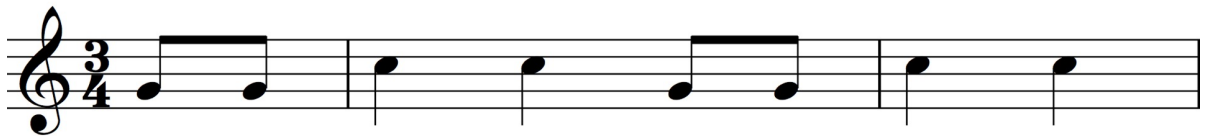
When the Saints Go Marching In



Chimes



London's Burning



Hot Cross Buns

