

# Gaudete

Descant

Treble

Tenor

Bass

Piano

5

D. Rec.

Tr. Rec.

T. Rec.

B. Rec.

Pno.

Fine

Fine

10<sup>8</sup>

D. Rec.

Tr. Rec.

T. Rec.

B. Rec.

Pno.

This musical score block covers measures 10 through 15. It features five staves: D. Rec. (Drum), Tr. Rec. (Trumpet), T. Rec. (Tenor), B. Rec. (Bass), and Pno. (Piano). The key signature is one flat (B-flat). Measures 10-12 show rhythmic patterns in the D. Rec. and Pno. parts, with accents (v) above notes in measures 10, 11, and 12. Measures 13-15 show more complex rhythmic patterns in the D. Rec. and Pno. parts, with accents (v) above notes in measures 13 and 15. The Tr. Rec. and T. Rec. parts are mostly silent in measures 10-12, then play in measures 13-15. The B. Rec. part is mostly silent in measures 10-12, then plays in measures 13-15.

15<sup>8</sup>

D. Rec.

Tr. Rec.

T. Rec.

B. Rec.

Pno.

This musical score block covers measures 15 through 18. It features five staves: D. Rec. (Drum), Tr. Rec. (Trumpet), T. Rec. (Tenor), B. Rec. (Bass), and Pno. (Piano). The key signature is one flat (B-flat). Measures 15-17 show rhythmic patterns in the D. Rec. and Pno. parts, with accents (v) above notes in measures 15, 16, and 17. Measures 18-20 show more complex rhythmic patterns in the D. Rec. and Pno. parts, with accents (v) above notes in measures 18 and 20. The Tr. Rec. and T. Rec. parts are mostly silent in measures 15-17, then play in measures 18-20. The B. Rec. part is mostly silent in measures 15-17, then plays in measures 18-20.

18<sub>8</sub>

D.C. al Fine

D. Rec.

Tr. Rec.

T. Rec.

B. Rec.

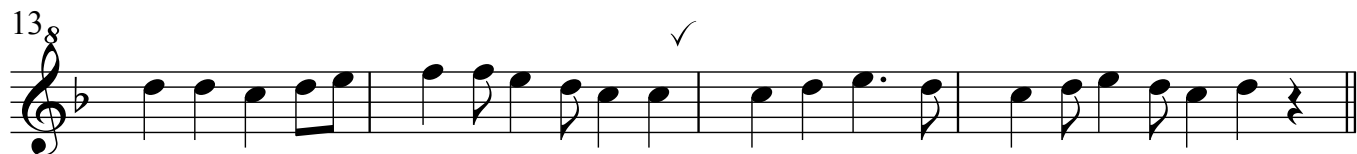
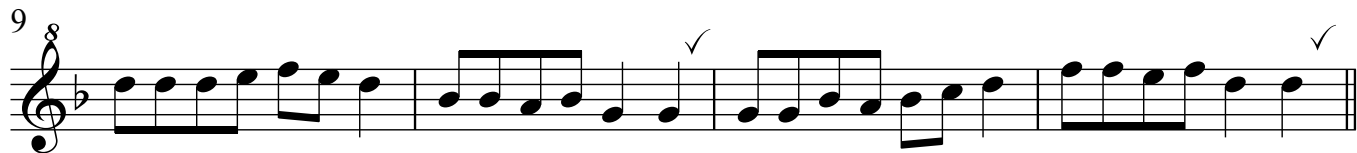
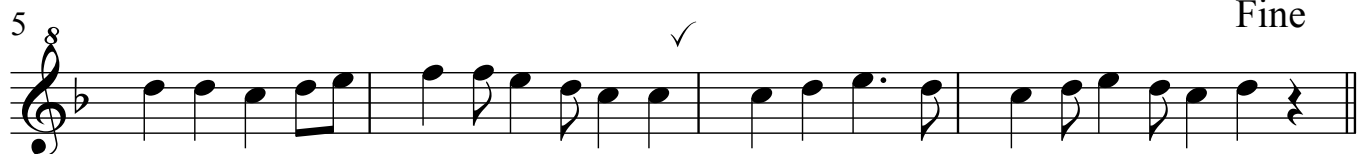
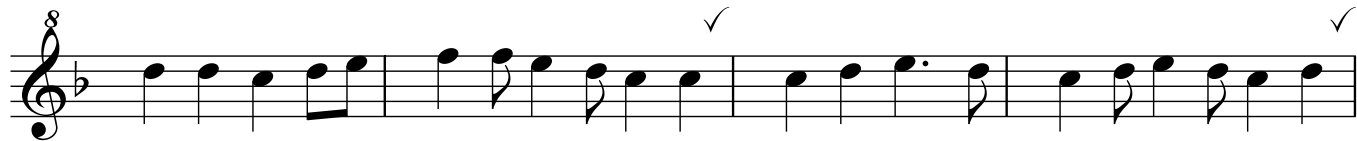
D.C. al Fine

Pno.

The image shows a musical score for four recorders (D. Rec., Tr. Rec., T. Rec., B. Rec.) and piano (Pno.). The score is in 3/8 time and begins at measure 18. The key signature has one flat (B-flat). The D. Rec. part consists of quarter notes: G4, A4, Bb4, C5, D5, E5. The Tr. Rec. part consists of quarter notes: G4, A4, Bb4, C5, D5, E5. The T. Rec. part consists of eighth notes: G4, A4, Bb4, C5, D5, E5. The B. Rec. part consists of quarter notes: G3, A3, Bb3, C4, D4, E4. The Pno. part consists of chords: G4-Bb4, A4-Bb4, Bb4-C5, C5-D5, D5-E5. The score ends with a double bar line and the instruction 'D.C. al Fine'.

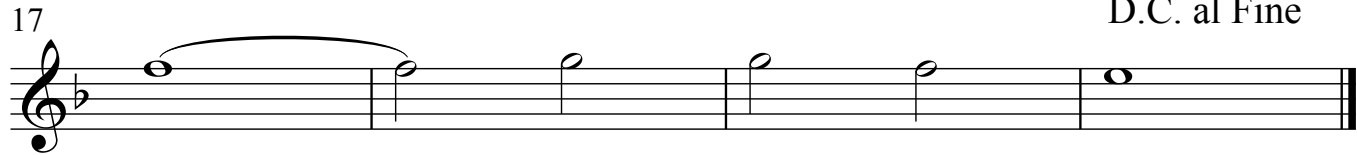
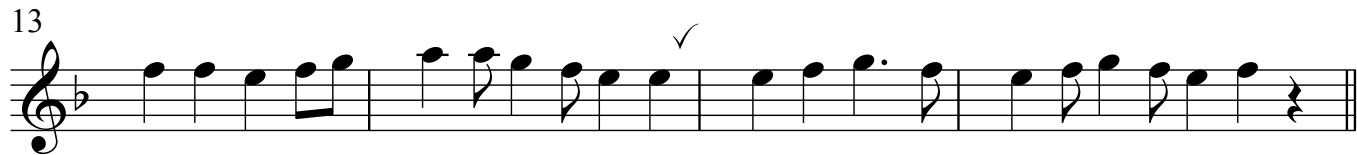
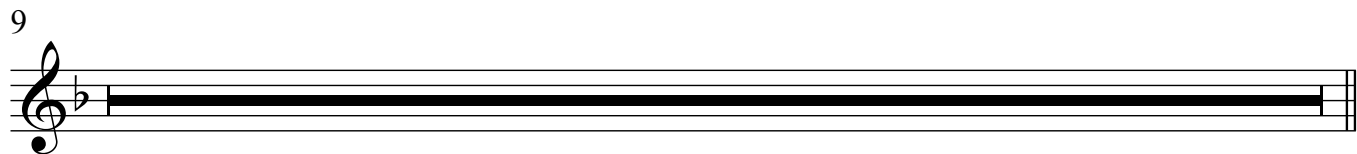
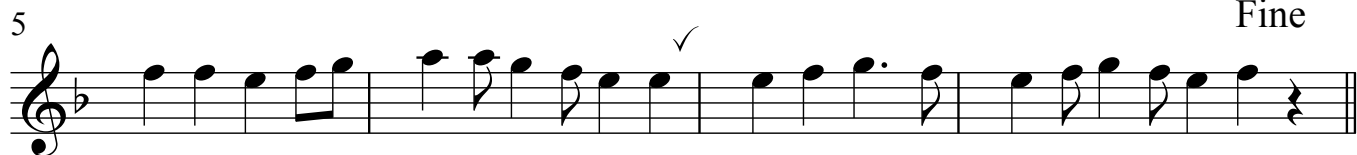
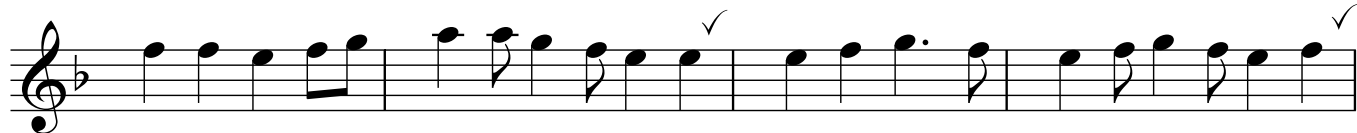
Descant

# Gaudete



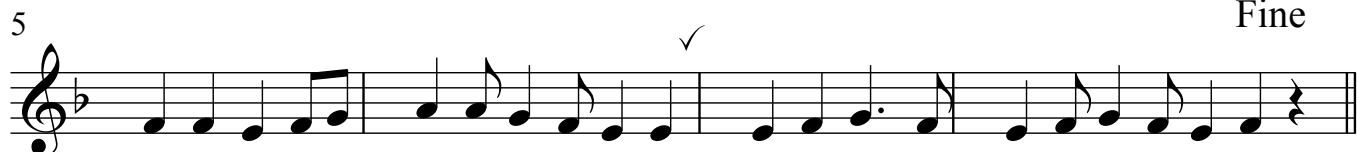
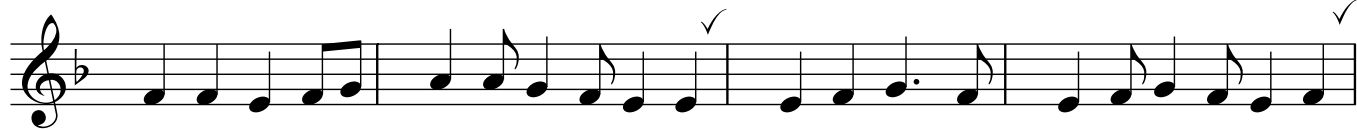
Treble

# Gaudete

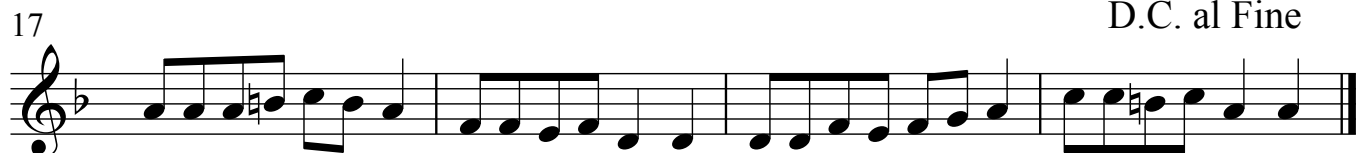
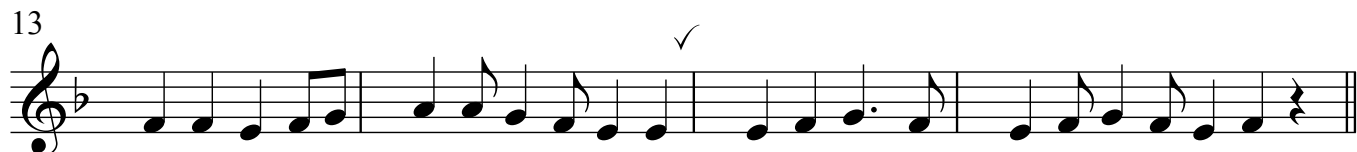
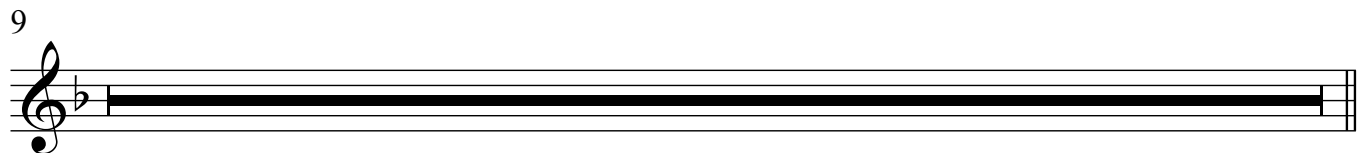


Tenor

# Gaudete



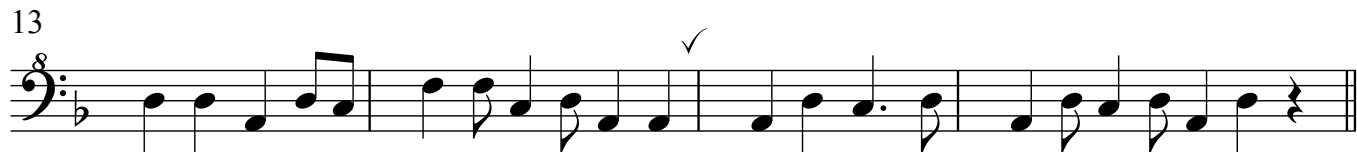
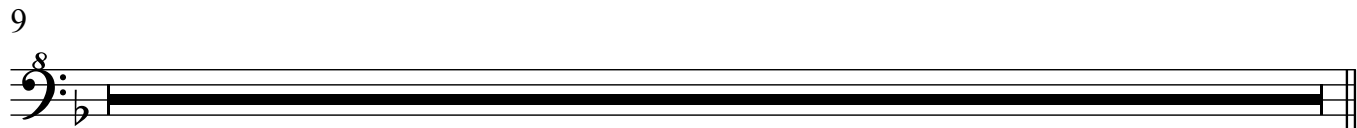
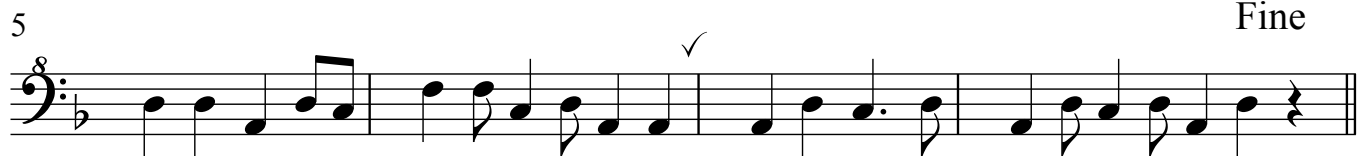
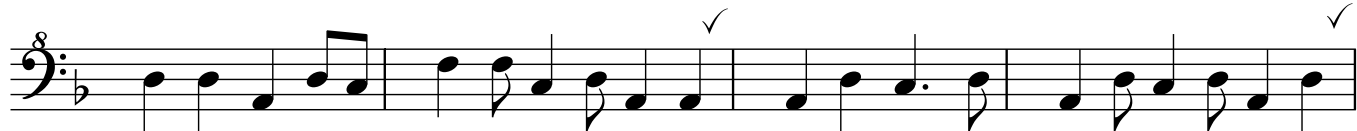
Fine



D.C. al Fine

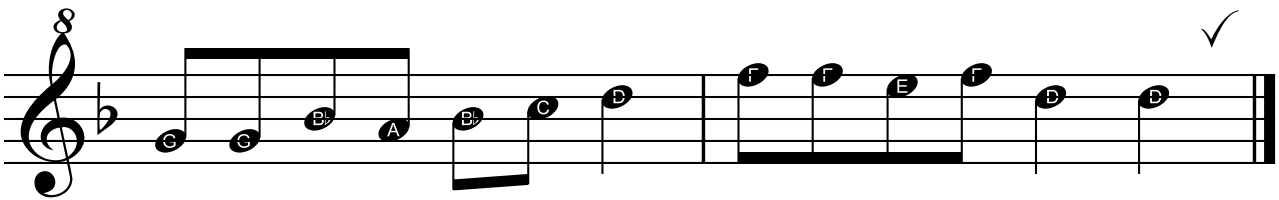
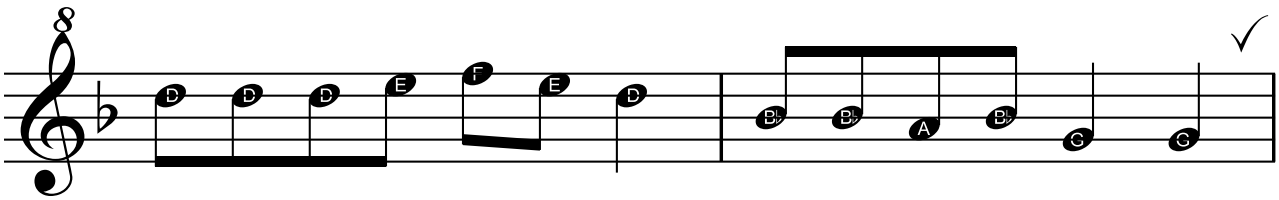
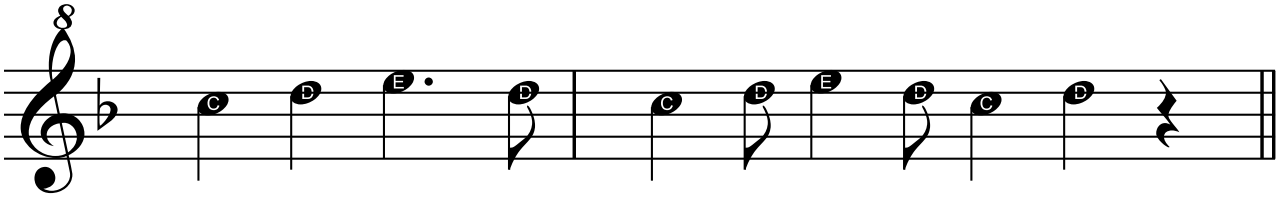
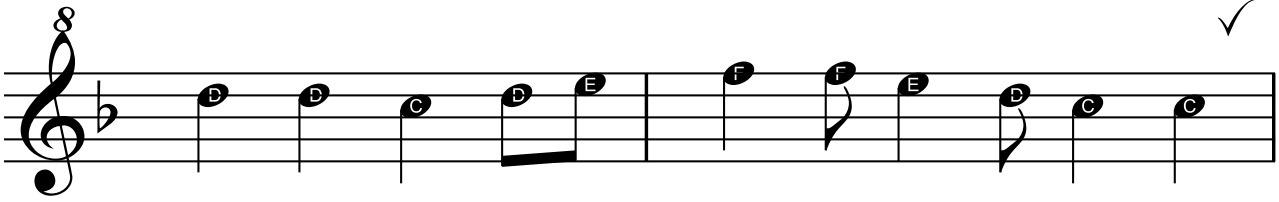
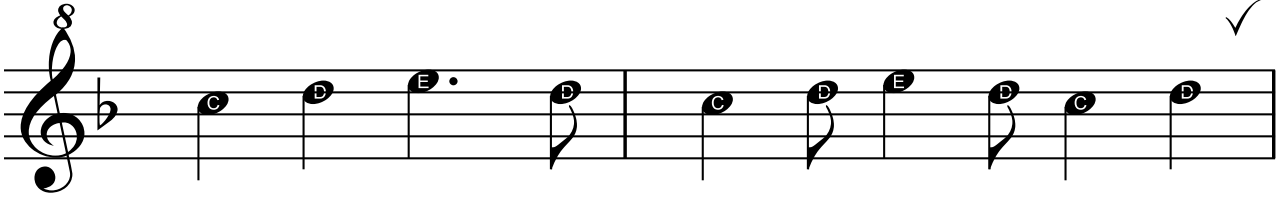
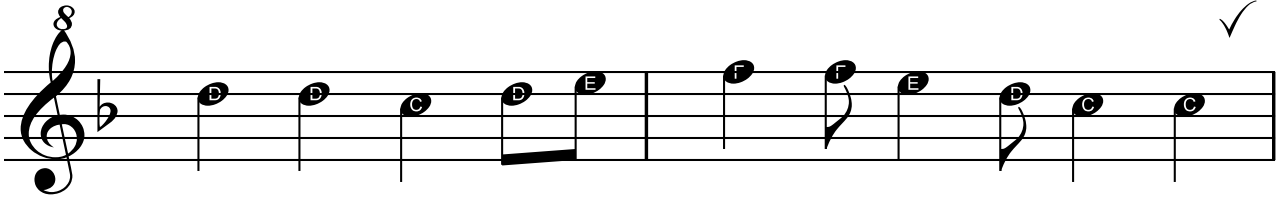
Bass

# Gaudete



# Descant

# Gaudete





Tenor

# Gaudete

