

# Ode to Joy

Theme from Beethoven's 9th symphony

Descant 1

Treble

Tenor

Bass

7

D. Rec.

Tr. Rec.

T. Rec.

B. Rec.

12

D. Rec.

Tr. Rec.

T. Rec.

B. Rec.

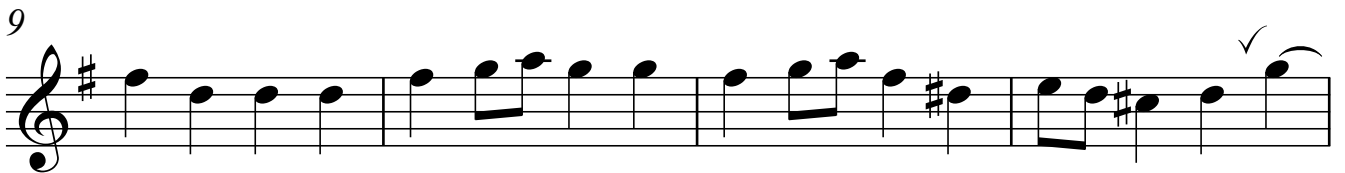
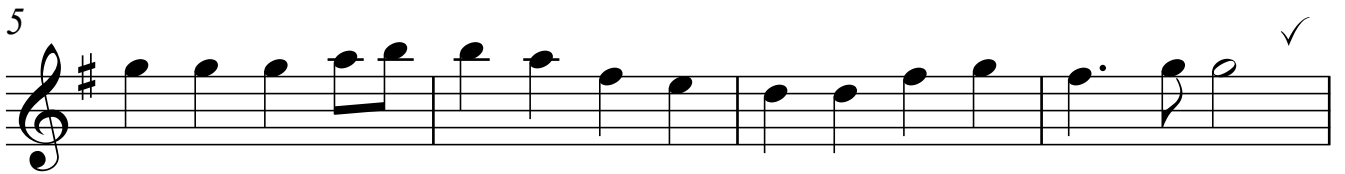
# Ode to Joy

Theme from Beethoven's 9th symphony

Musical score for the first 15 measures of the 'Ode to Joy' theme. The score is written in G major (one sharp) and 4/4 time. It consists of eight staves of music, each starting with a measure number (8, 3, 5, 7, 9, 11, 13, 15) and a treble clef. The notes are labeled with their letter names (A, B, C, D, E, G). The key signature is G major (one sharp). The time signature is 4/4. The score includes various note values (quarter, eighth, and dotted notes) and rests. There are checkmarks above the notes in measures 3, 7, 9, 11, and 13. The piece ends with a double bar line at the end of measure 15.

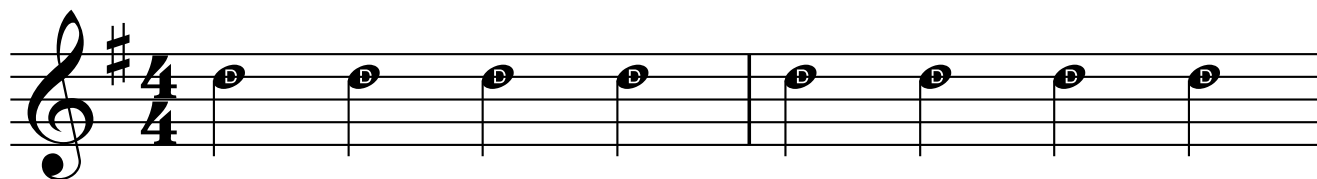
# Ode to Joy

Theme from Beethoven's 9th symphony

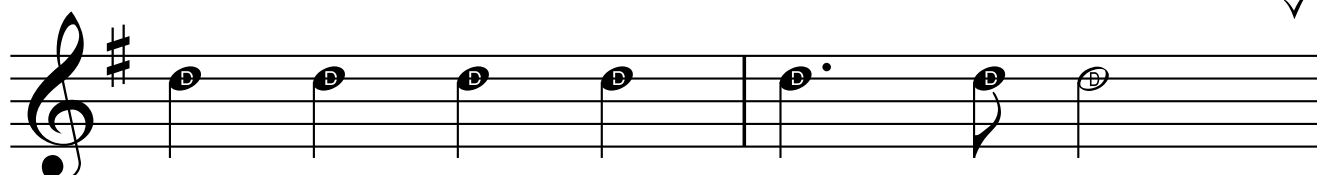


# Ode to Joy

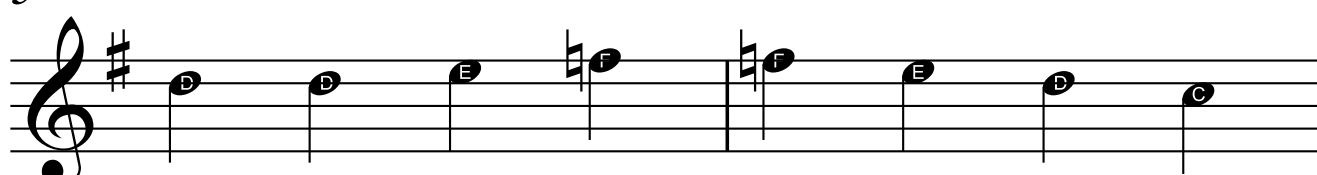
Theme from Beethoven's 9th symphony



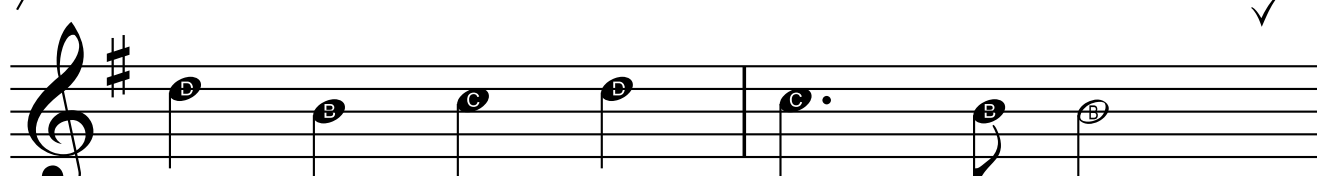
3



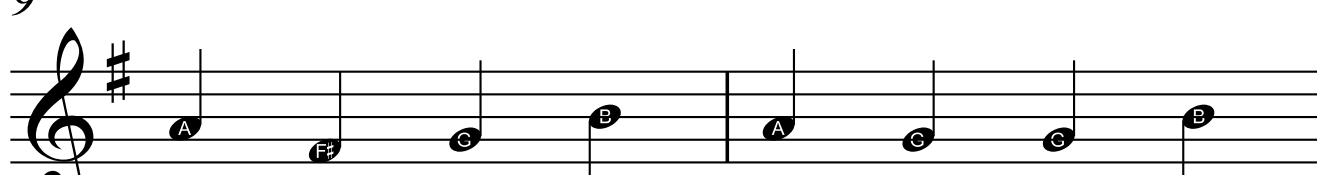
5



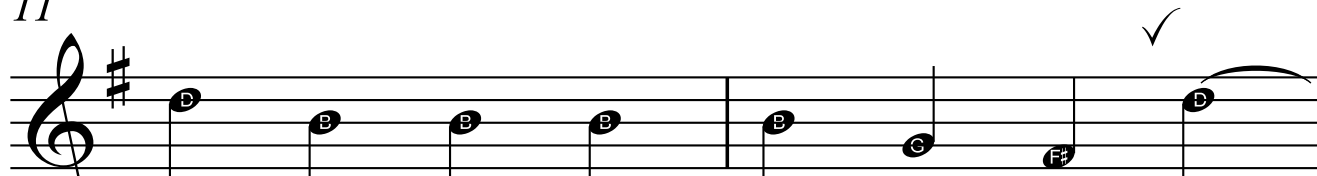
7



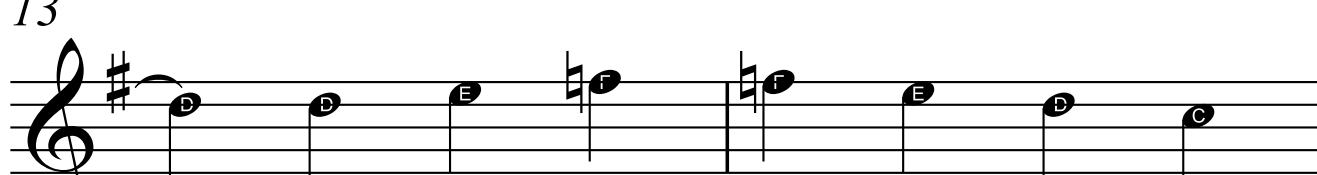
9



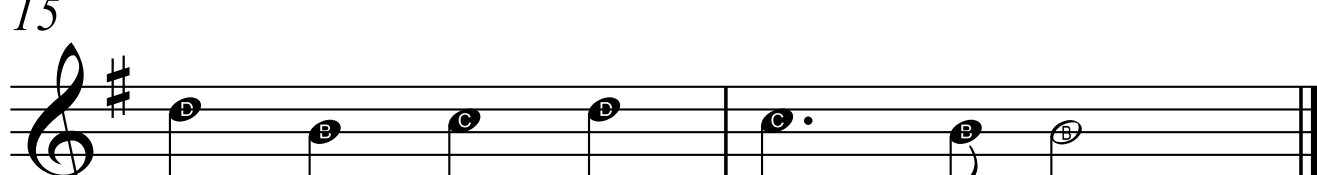
11



13



15



# Ode to Joy

Theme from Beethoven's 9th symphony

