

# Symphony No.40

## 1st theme

Mozart

Musical score for the first system of the 1st theme of Mozart's Symphony No. 40. The score is arranged for a woodwind ensemble consisting of seven recorder parts: Sopranino Recorder, Descant Recorder, Treble Recorder, Treble Recorder, Tenor Recorder, Bass Recorder, and Descant Recorder. The music is written in G major and 3/4 time. The first system contains four measures. The Sopranino Recorder, Descant Recorder, and Treble Recorder parts play a melodic line with eighth-note patterns and slurs. The second Treble Recorder part plays a rhythmic accompaniment of eighth-note chords. The Tenor Recorder part plays a rhythmic accompaniment of eighth-note chords. The Bass Recorder part plays a simple bass line with quarter notes. The final Descant Recorder part plays a rhythmic accompaniment of eighth-note chords.

Musical score for the second system of the 1st theme of Mozart's Symphony No. 40. The score continues from the first system and is arranged for the same seven recorder parts. The music is written in G major and 3/4 time. The second system contains five measures. The melodic lines in the Sopranino Recorder, Descant Recorder, and Treble Recorder parts continue with eighth-note patterns and slurs. The rhythmic accompaniment in the second Treble Recorder, Tenor Recorder, and final Descant Recorder parts continues with eighth-note chords. The Bass Recorder part continues with a simple bass line. A measure rest is indicated above the Bass Recorder staff in the second measure of this system. The system concludes with a double bar line and a fermata over the final note.

10<sub>8</sub>

This musical system contains measures 10 through 14. It features six staves: five treble clefs and one bass clef. The music is written in a key with one sharp (F#) and a common time signature. The notation includes various note values, rests, and phrasing slurs. The bass clef staff has a long, sweeping slur across measures 10, 11, and 12, ending with a sharp sign (#) in measure 14.

15<sub>8</sub>

This musical system contains measures 15 through 19. It features six staves: five treble clefs and one bass clef. The music is written in a key with two sharps (F# and C#) and a common time signature. The notation includes various note values, rests, and phrasing slurs. The bass clef staff has a long, sweeping slur across measures 15, 16, and 17, ending with a sharp sign (#) in measure 19.

# Symphony No.40

## 1st theme

4

6

8

10

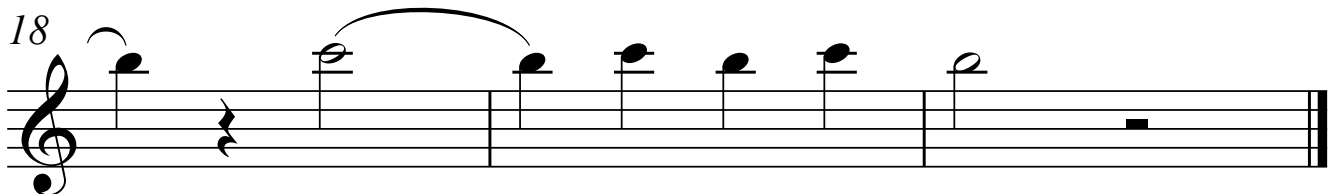
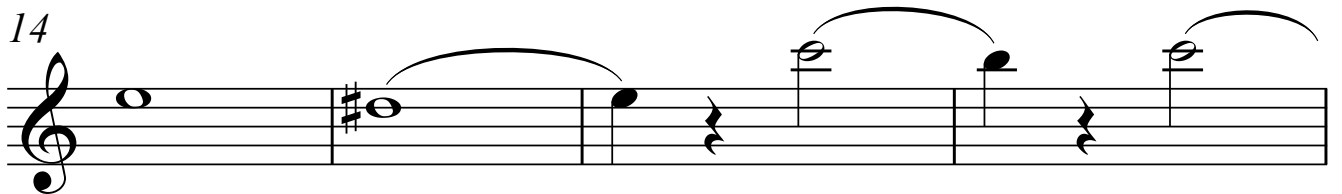
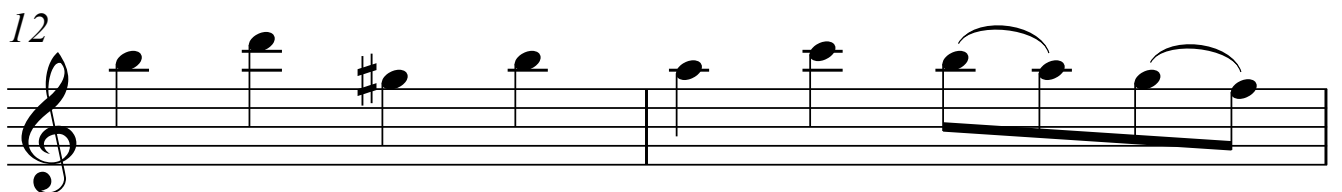
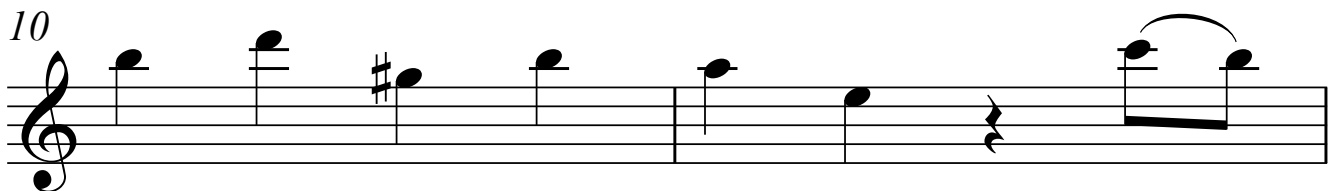
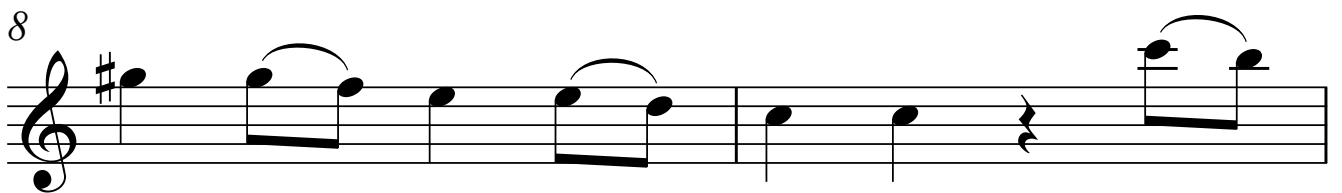
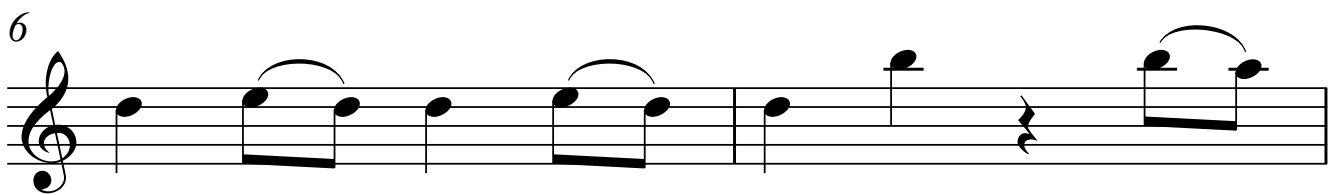
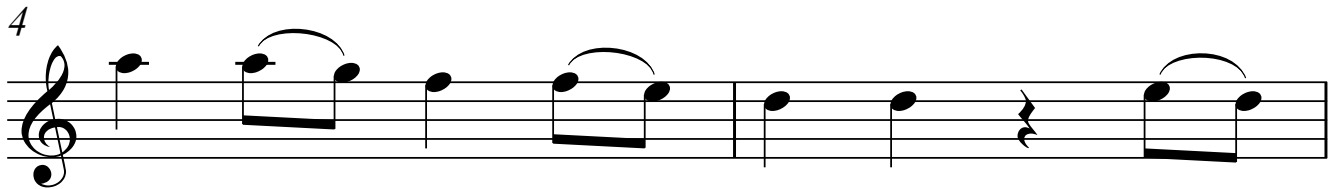
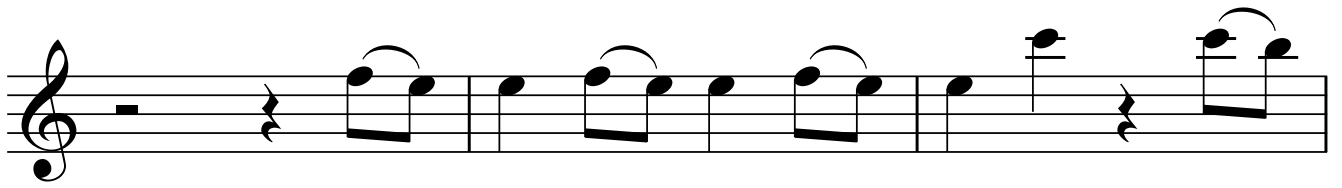
12

14

18

Treble Recorder **Symphony No.40**  
1st theme

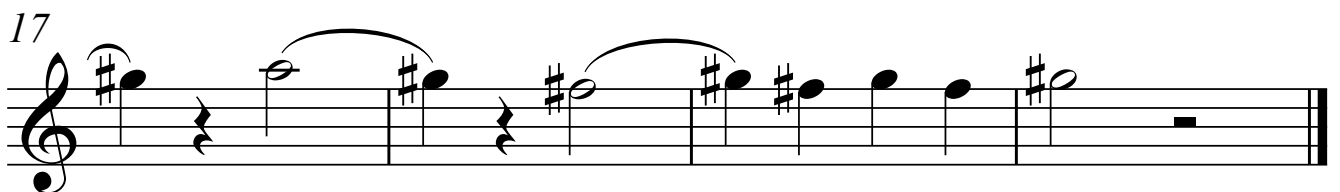
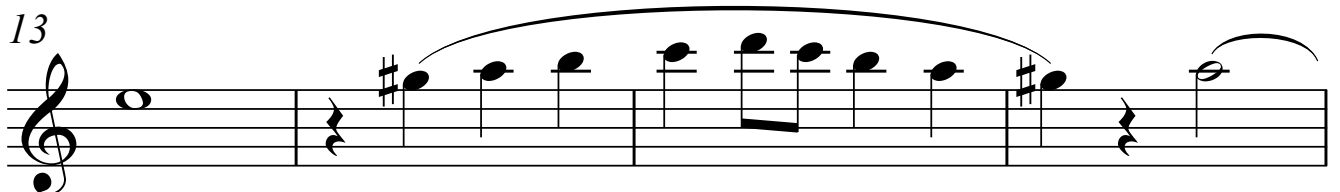
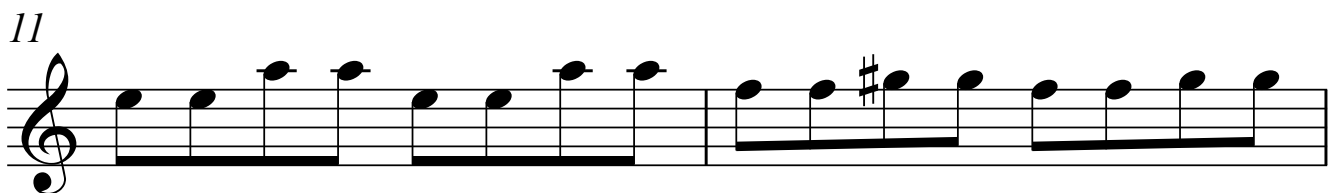
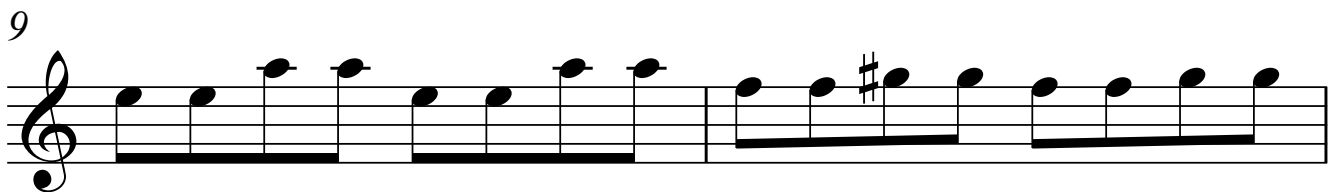
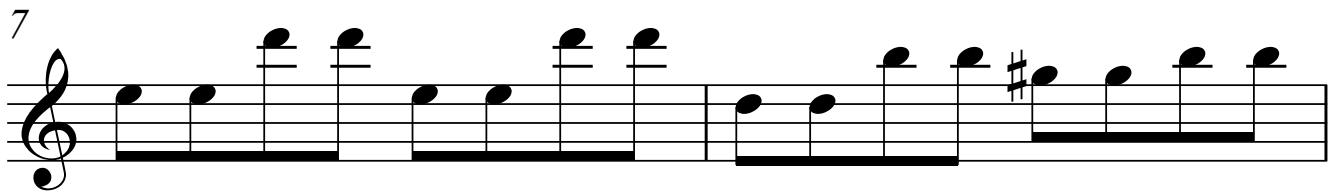
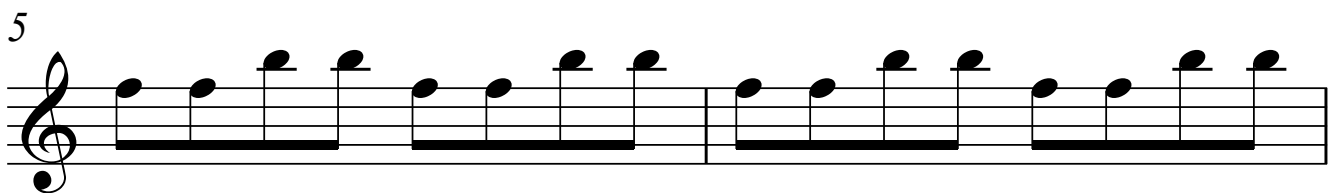
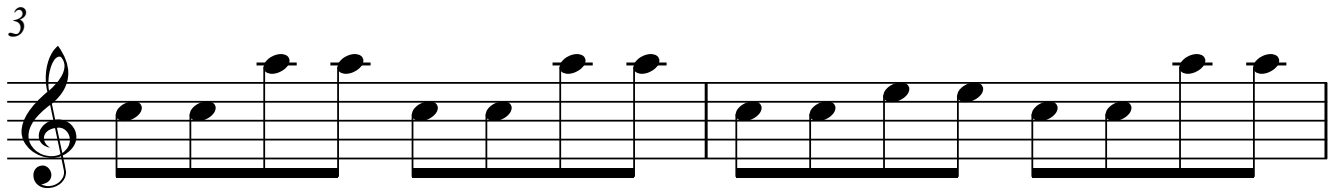
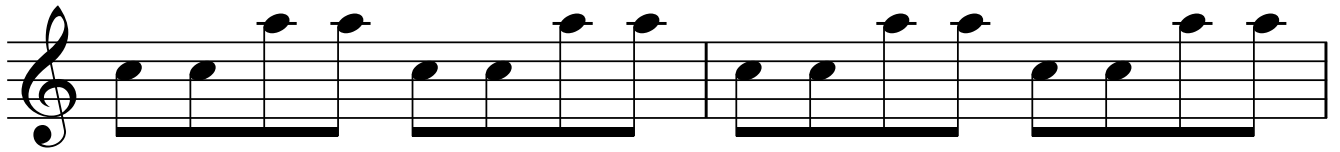
Mozart



# Treble Recorder *Symphony No.40*

## 1st theme

Mozart

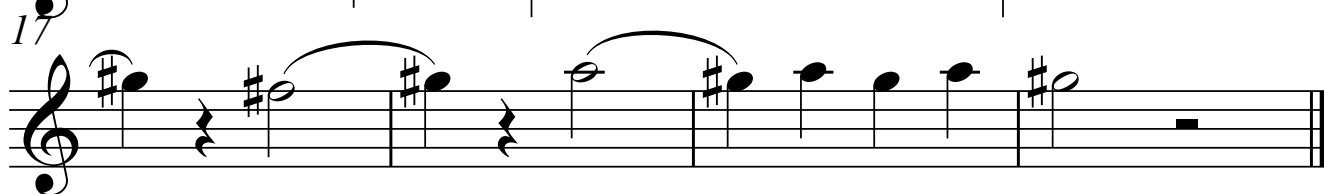
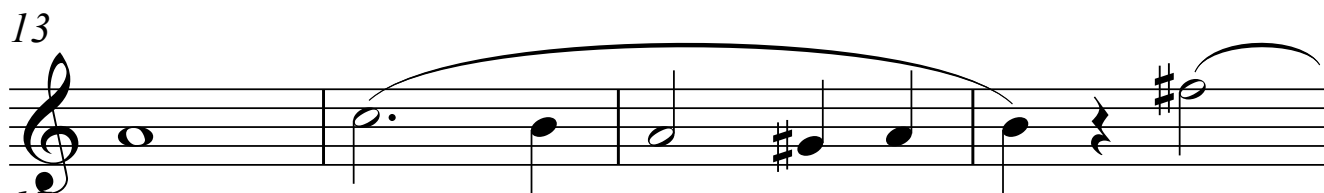
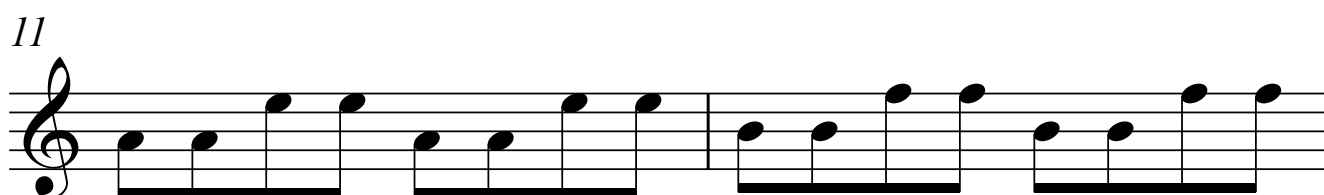
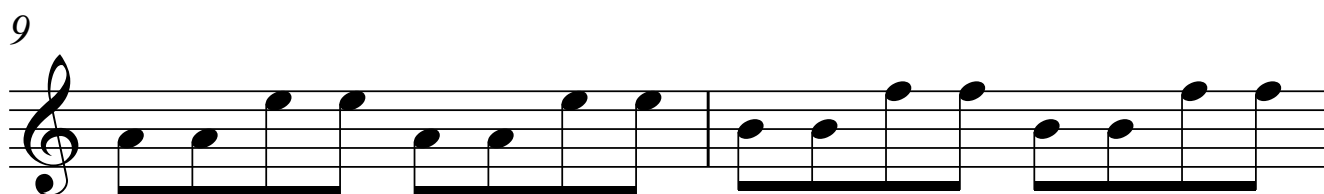
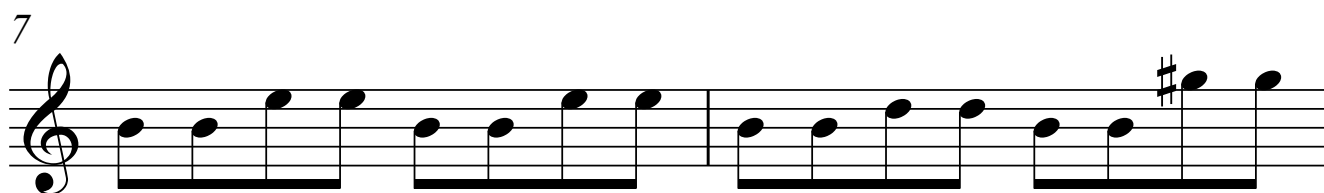
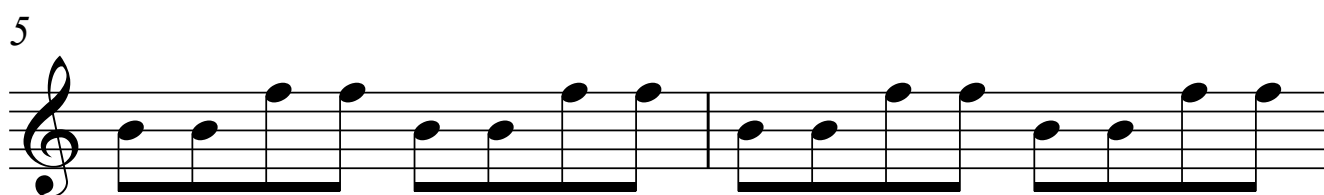
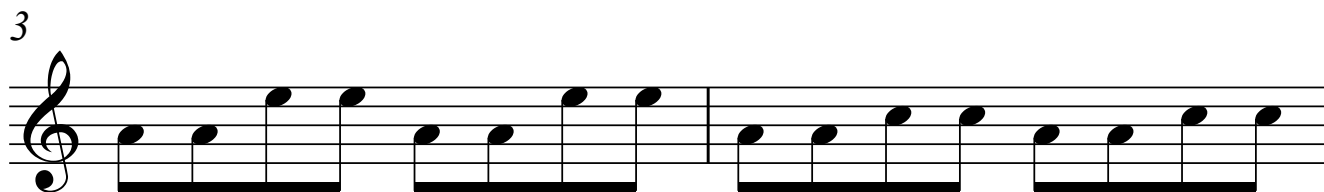


Tenor Recorder

# Symphony No.40

Mozart

1st theme

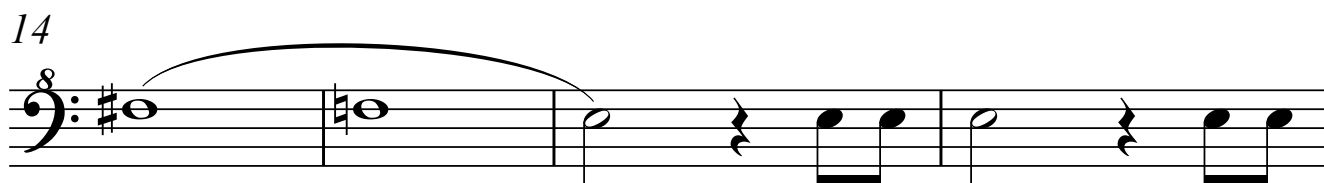
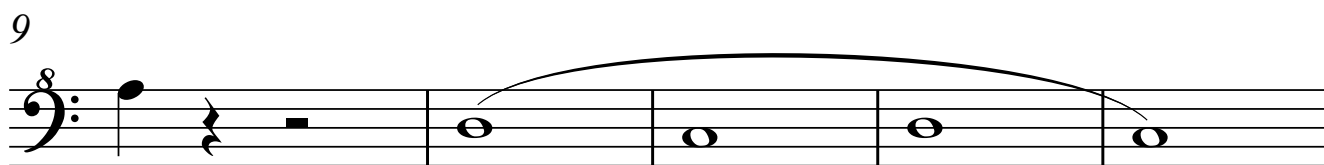
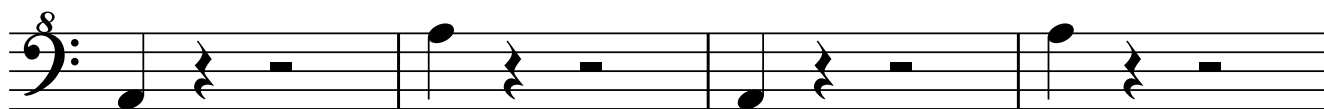


Bass Recorder

# Symphony No.40

Mozart

1st theme



# Symphony

8

8

4

4

6

6

8

8

10

10

12

12

14

14

18

18



# Symphony

