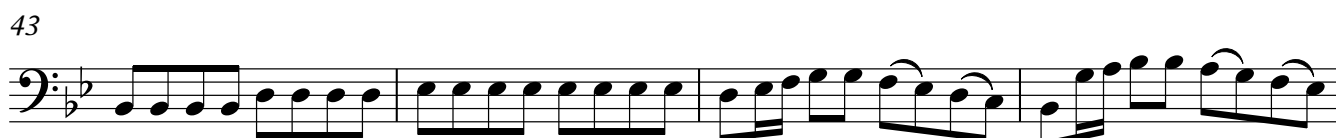
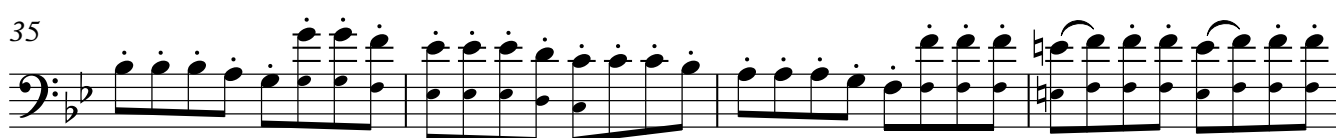
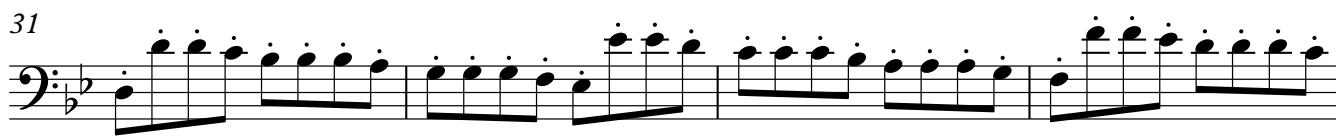
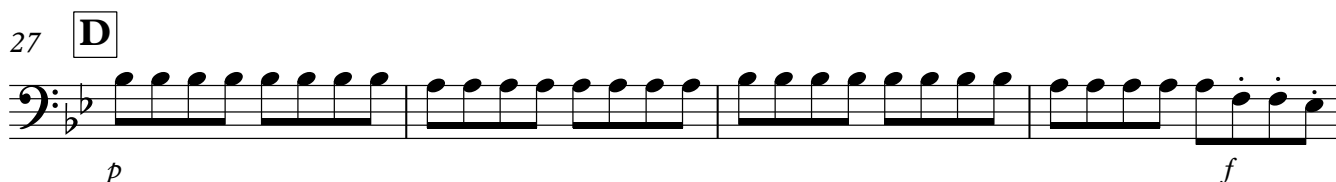
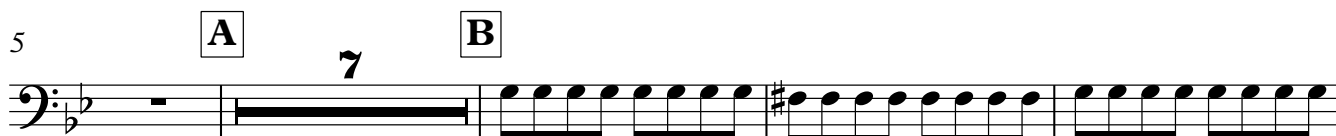


Violoncello

Symphonie No39

1. Allegro assai

Joseph HAYDN



Violoncello

47

Musical staff with a key signature of two flats (B-flat and E-flat) and a common time signature. It begins with a melodic line of eighth notes. The staff concludes with two endings: the first ending is marked '1.' and the second ending is marked '2.'.

F

Musical staff for section F, featuring a continuous eighth-note pattern. The dynamics are marked with a forte *f*.

f

Musical staff continuing the eighth-note pattern from section F.

p

G

Musical staff for section G, continuing the eighth-note pattern. The dynamics are marked with a forte *f*.

f

Musical staff continuing the eighth-note pattern from section G.

H

Musical staff for section H, continuing the eighth-note pattern.

Musical staff continuing the eighth-note pattern from section H.

I

Musical staff for section I, continuing the eighth-note pattern. The dynamics are marked with a piano *p*.

p

Musical staff continuing the eighth-note pattern from section I.

J

Musical staff for section J, continuing the eighth-note pattern. The dynamics are marked with a piano *p*.

p

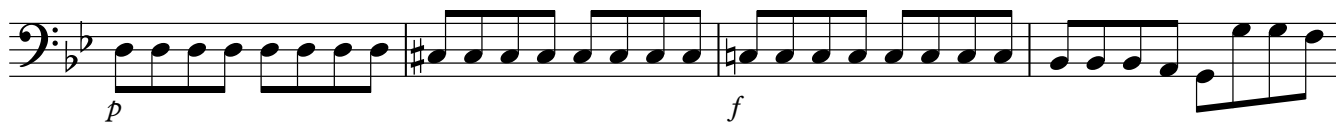
Musical staff continuing the eighth-note pattern from section J, ending with a fermata and a dynamic marking of forte *f*.

5

f



K



L

